

# NITRUM



## QUICKIE NITRUM

Billing Address Or Customer-ID			Shipping Address	Identical To Billing Address
C.-ID:			C.-ID:	
Name:			Name:	
Street:			Street:	
Town/PC:			Town/PC:	
E-Mail:			E-Mail:	
Phone:			Phone:	
Order Information			User Weight	
Order	Calculation	Built-4-Me®	<b>Max. user weight: 125 kg</b>	
Purchase Order No.:			<b>User Weight:</b>	<b>kg</b>
<b>Art. No.: 66000001</b>			Reimbursement Code: xxx	
Order Date:	Day	Month	Year	

Base Price

**£2,395**

Nitrum		£
NTR010034	Nitrum: Open frame, backrest-angle and CoG adjustable, 125 kg max user weight	2,395
NTR010036	Nitrum Pro: Open frame, fixed welded backrest angle and CoG, 125 kg max user weight	2,395
NTR010035	Nitrum: Hybrid frame, backrest-angle and CoG adjustable, 140 kg max user weight	2,395
NTR010037	Nitrum Pro: Hybrid frame, fixed welded backrest angle and CoG, 140 kg max user weight	2,395

Backrest-style for Pro versions						£		
NTR010044	Fixed welded, non angle-adjustable, non foldable					400		
<b>Angle to the Ground</b>	-4° (86°)	-2° (88°)		0° (90°)		+2° (92°)	+4° (94°)	
<b>Backrest Height</b>	275	300	325	350	375	400	425	450
NTR030404	Backrest cross-tube, wide (78 mm clearance between backrest upholstery and cross-tube)						0	
NTR030403	Backrest cross-tube, narrow (48 mm clearance between backrest upholstery and cross-tube)						0	
NTR010038	Angle-adjustable, foldable						550	

Seat Width											£
<b>(mm)</b>	320	340	360	380	400	420	440	460	480	500	

Seat Depth											£
<b>(mm)</b>	340	360	380	400	420	440	460	480	500		

Dimensions																	£
Fork (Length)	Frame	430	440	450	460	470	480	490	500	510	520	530	540	550	560	570	
3" (111mm)	Low																
3" (111mm)	High																
4" (111mm)	Low																
4" (123mm)	Low																
4" (Frog Leg)	Low																
4" (111mm)	High																
4" (123mm)	High																
4" (Frog Leg)	High																
5" (111mm)	Low																
5" (123mm)	Low																
5" (Frog Leg)	Low																
5" (111mm)	High																
5" (123mm)	High																
5" (Frog Leg)	High																
6" (123mm)	Low																
6" (Frog Leg)	Low																
6" (123mm)	High																
6" (Frog Leg)	High																

Rear Seat Height (the rear seat height can only be between 0 mm and 130 mm below the selected front seat height)																£
Rear Seat Height in mm	370	380	390	400	410	420	430	440	450	460	470	480	490	500		
24" Rear Wheels (3) (5)																
25" Rear Wheels (4) (5)																

(1) Also available as one arm fork; please choose fork type on the following pages

(2) High Frame is 40 mm taller than Low Frame. On lower or medium seat-heights, the high frame gives you the opportunity to choose a shorter fork/smaller caster


(3) No decline or increase of the seat height possible for rear height 370 and 490 mm

(4) No decline or increase of the seat height possible for rear height 380 and 500 mm

(5) Rear seat height 370mm (24") and 380mm (25") only possible with NTR020012/ 17/ 18 seat-sling strap-style airflow

## Seat £

### Seat Sling

NTR020002	Seat sling, nylon, tension adjustable, 1 utility bag	0
NTR020003	Seat sling, nylon, tension adjustable, 2 utility bags (1)	51
NTR020004	Seat sling, nylon, tension adjustable, 1 utility bag, 1 catheter bag (1)	81
NTR020012	Seat sling, strap-style (airflow), tension adjustable with 1 utility bag (2) (3)	239
NTR020017	Seat sling, strap-style (airflow), tension adjustable with 2 utility bag (1) (2) (3)	270
NTR020018	Seat sling, strap-style (airflow), tension adjustable with utility bag and catheter bag (1) (2) (3)	301
NTR020019	Seat sling, Airflow, superlight without bag (max user-weight 85 kg) (2) (3) (4) 	239
NTR020000	Without seat sling	0

### Seat cushion, cover with zipper, black

NTR020101	Seat cushion, foam (medium-soft), cover with zipper, black, 30 mm	66
NTR020102	Seat cushion, foam (medium-soft), cover with zipper, black, 50 mm	66
NTR020103	Seat cushion, Latex (very soft), cover with zipper, black, 50 mm	66
NTR020104	Seat cushion, Latex (very soft), cover with zipper, black, 80 mm	66

### Seat cushion, climatic membrane water-resistant, cover with zipper, black

NTR020105	Seat cushion, foam (medium-soft), climatic membrane water-resistant, cover with zipper, black, 30 mm	123
NTR020106	Seat cushion, foam (medium-soft), climatic membrane water-resistant, cover with zipper, black, 50 mm	123
NTR020107	Seat cushion, Latex (very soft), climatic membrane water-resistant, cover with zipper, black, 50 mm	123
NTR020108	Seat cushion, Latex (very soft), climatic membrane water-resistant, cover with zipper, black, 80 mm	123


### Seat accessories

NTR090018	Positioning belt (5)	42
NTR020150	Spare cushion cover	44

### JAY Cushions – for complete product range see JAY order forms

JAY020002	JAY Basic	55
JAY020003	JAY Soft Combi P	77
JAY020001	JAY Easy Visco C	132
JAY020007	JAY Easy Fluid, Curved Base	308
JAY020004	JAY Lite, Curved Base	215

## Backrest £

NTR030157	Aluminium backrest, push-bar release (6)					
	250-300	300-350	350-400	400-450		
	250	300	350	400		
	275	325	375	425		
	300	350	400	450		
NTR030158	Aluminium backrest, twist-lock release (7)					150
	275	325	375	425		
	300	350	400	450		
NTR030159	Lightweight Aluminium backrest, push-bar release (8) 					100
	250	300	350	400	450	
	275	325	375	425		
	NTR030404	Backrest cross-tube, wide (78 mm clearance between backrest upholstery and cross-tube) (9)				0
	NTR030403	Backrest cross-tube narrow (48 mm clearance between backrest upholstery and cross-tube) (9)				0
NTR030012	Backrest, angle-adjustable (non foldable) (10)					0
NTR030015	Backrest, angle-adjustable, fold-down. Standard colour: black (10)					0
	Bracket Colour	Orange	Silver	Red	Blue	
NTR030102	Backrest, angle-adjustable, fold-down, locked when folded, colour: black					54

(1) Only from SW 360 mm

(2) Not possible to convert strap-style upholstery to standard upholstery

(3) Only up to 480 mm

(4) Max user weight 85kg, max seat-width 400mm

(5) Not with fixed welded backrest

(6) Choose back height factory setting (mm). Height adjustments possible in the range 250 - 300


mm; 300 - 350 mm; 350 - 400 mm; 400 - 450 mm

(7) Not with seat width 320 mm; fixed height; not with NTR030012

(8) Fixed height, not in combination with push handles, height adjustable

(9) Only with NTR030159 Lightweight Aluminium backrest, push-bar release

(10) Adjustable: -17,5° to +10°

Push Handles (1)				£
NTR030200	Omit Push Handles			0
NTR030201	Push handles long (2)			0
NTR030203	Push handles, fold-down (2) (3)			129
NTR030204	Push handles, height-adjustable (3) (+)			171

Backrest Upholstery				£			
NTR030316	EXO Backrest sling, synthetic fibre, padded, adjustable, 1 accessory bag, black			0			
	Colour Binding Tape	Black	Orange	Silver	Red	Blue	
NTR030317	EXO PRO Backrest, synthetic fibre, padded, adj., breathable, spacer fabric, 1 accessory bag, black						147
	Colour Binding Tape	Black	Orange	Silver	Red	Blue	
NTR030300	Without backrest sling						0

Freestyle Back				£	
NTR030090	Freestyle back with J3 Carbon Back (SC)			713	
	Backrest shell height 240 mm (4)				
	Backrest shell width 320 mm – can be used from SW 320 mm				
	Backrest shell width 370 mm – can be used from SW 380 mm				
	Backrest shell width 420 mm – can be used from SW 440 mm				
	Backrest shell height 310 mm (5)				
	Backrest shell width 320 mm – can be used from SW 320 mm				
	Backrest shell width 370 mm – can be used from SW 380 mm				
	Backrest shell width 420 mm – can be used from SW 440 mm				
NTR030012	Backrest, angle-adjustable (non foldable) (6)			0	
NTR030015	Backrest, angle-adjustable, fold-down. Standard colour: black (6) (7)			0	
	Black	Orange	Silver	Red	
NTR030102	Backrest, angle-adjustable, fold-down, locked when folded. Standard colour: black			54	
NTR030211	Push handles removable (8)			171	

Jay Backs (9)				£
<b>JAY J3 Back, Shallow Contour (SC)</b>	<b>Short (S)</b>	<b>Medium (M)</b>	<b>Tall (T)</b>	
Mid Thoracic (MT)		JAY030010	JAY030033	506
Upper Thoracic (UT)	JAY030012	JAY030019	JAY030025	572
Shoulder Height (SH)	JAY030015	JAY030022	JAY030028	572
<b>JAY J3 Back, Mid Contour (MC)</b>	<b>Short (S)</b>	<b>Medium (M)</b>	<b>Tall (T)</b>	
Mid Thoracic (MT)		JAY030011	JAY030018	506
Upper Thoracic (UT)	JAY030013	JAY030020	JAY030026	572
Shoulder Height (SH)	JAY030016	JAY030023	JAY030029	572
<b>JAY J3 Carbon Back, Shallow Contour (SC)</b>	<b>Short (S)</b>		<b>Tall (T)</b>	
Lower Thoracic	JAY060001		JAY060002	605
Mid Thoracic	JAY060003		JAY060004	605

#### Accessories for JAY J3 Backs

WHT030415	Whitmyer Headrest, COBRA XTRA, flip back (10)			255
WHT030416	Whitmyer Headrest, AXYS, Standard (10)			138
JAY090058	JAY Accessory bag (11)			50

(1) Not in combination with Freestyle back  
(2) Not with height adjustable push handles  
(3) Only available from 325 mm backrest height  
(4) Backrest height 275 - 350 mm  
(5) Backrest height 325 - 425 mm  
(6) -17,5° - +10

(7) Always with push-bar release  
(8) Only with NTR030090 Freestyle back with J3 Carbon Back (SC)  
(9) Not with NTR030090 Freestyle back with J3 Carbon Back (SC)  
(10) Only with JAY J3 Backs  
(11) Only with JAY J3 Carbon Backs

Sideguard Mounting		£
NTR040061	Flip-Back option for sideguards (14)	0

Armrest & Sideguards		£
NTR040101	Sideguard, carbon fibre, slim, black (1) (2) 	202
NTR040102	Sideguard, aluminium, cold weather protection (in frame colour)	176
NTR040103	Sideguard, aluminium, cold weather protection, fender (in frame colour) (3)	242
NTR040104	Sideguard, carbon fibre, fender, cold weather protection, black (3)	316
NTR040107	Sideguard, composite, removable, 21 cm high (310 mm long), black (4)	0
NTR040050	Single-post sideguard, height-adjustable, removable, armpad (250 mm) (4) (5) (+)	176
NTR040051	Single-post sideguard, height-adjustable, removable, armpad long (330 mm) (4) (5) (+)	176
NTR040052	Single-post sideguard, armpad (330 mm), tool height-, depth-adjustable, removable (5) (6) (+)	202
NTR040117	Tubular armrest, Alu, swing away (sideways), padded, removable (7) (+)	203
NTR040000	Without Sideguard	0

Footboards		£
NTR050029	Footrest, tubular, lightweight, aluminium (8) 	0
NTR050030	Footrest, tubular, lightweight, aluminium, with cover (8)	73
NTR050025	Platform footplate lightweight angle & depth adjustable composite (8)	149
NTR050024	Platform footplate lightweight angle & depth adjustable aluminium (colour: frame colour) (8)	149
NTR050026	Platform footplate lightweight angle & depth adjustable carbon (8)	305
NTR050034	Footboard, platform, lightweight, aluminium, angle and depth-adjustable, high-mount, calf strap, frame colour	149
NTR050125	Performance footplate angle adjustable (8)	222
NTR050128	Footboard, platform, plastic, angle and depth adjustable, flip-up (to the back) (9) (11) (+)	21
NTR050022	Footboard, divided, aluminum, angle-adjustable, flip-up (sideways), heel loop, frame colour (10) (12) (+)	147
NTR050127	Adjustable side protection, to create a side-stop on the footboard (13)	21

Lower Leg Length (LLL)								£
220	230	240	250	260	270	280	290	
300	310	320	330	340	350	360	370	
380	390	400	410	420	430	440	450	
460	470	480	<input type="checkbox"/> 490	<input type="checkbox"/> 500	<input type="checkbox"/> 510	<input type="checkbox"/> 520		

**Low frame: LLL 220 - 350 mm only with high mounted footrest; for all other footrests from LLL 360 - 500 mm.**

**High Frame: LLL 220 - 390 mm only with high mounted footrest; for all other footrests from LLL 400 - 520 mm.**

(1) With 24" rear wheel min. rear seat height 410 mm; with 25" rear wheel min. rear seat height 430 mm  
 (2) Slim style, carbon fibre  
 (3) Minimum seat height 390 mm  
 (4) Quickie style  
 (5) Not with tubular armrest  
 (6) Not with COG 92 mm & 104 mm  
 (7) Not in combination with handbike axle

(8) LLL 360 mm - 520 mm  
 (9) LLL from 330 mm, not with 4" castor  
 (10) LLL from 380 mm with low frame, from 420 mm with high frame, not with 4" & 6" castor  
 (11) 125 kg max user weight  
 (12) Only up to 480 mm seat width  
 (13) Only for platform footplates lightweight angle & depth adjustable  
 (14) Only with NTR040102 Sideguard aluminium, not with Pro option in combination with fixed welded backrest, not in combination with NTR030158 Backrest, twist-lock

## Frame Options

£

### Frame Length

NTR010206	Frame standard	0
NTR010207	Frame long (1)	0

### Frame Angle

NTR010012	100° frame (2)	0
NTR010013	92° Performance frame (2)	0
NTR010009	88° Performance compact frame (2) (3)	116

### Frame Inset

NTR010100	Inset: Standard (0 mm)	0
NTR010101	Inset: Small (10 mm) (4)	0
NTR010103	Inset: Performance (30 mm) (5)	116

### Accessories

NTR110156	Twin-LED light (mounted on caster links, battery and controller on calf-strap)	250
NTR110040	Design frame protection	67
NTR010500	Wheelbase extension for add-on bike (6) (+)	316

## Centre of Gravity

£

COG20	Centre of Gravity 2cm	
COG32	Centre of Gravity 3.2cm	
COG44	Centre of Gravity 4.4cm	
COG56	Centre of Gravity 5.6cm	
COG68	Centre of Gravity 6.8cm	
COG80	Centre of Gravity 8.0cm	
COG92	Centre of Gravity 9.2cm	
COG104	Centre of Gravity 10.4cm	

## Frame Accessories

£

### Suspension

NTR090031	Suspension (up to 70 kg) (7) (8) (+)	451
NTR090032	Suspension (up to 120 kg) (7) (8) (+)	451

### Tip assist (step tube)

NTR090001	Tip assist, left	28
NTR090002	Tip assist, right	28
NTR090003	Tip assist, pair (9) (+)	54
NTR090009	Crutch holder (10)	67

### Anti-tip tubes swing-away

NTR090004	Anti-tip tubes, swing-away, left (+)	87
NTR090005	Anti-tip tubes, swing-away, right (+)	87
NTR090006	Anti-tip tubes, swing-away, pair (11) (+)	176
NTR090007	Anti-tip tubes, plug-in, pair (+)	73

### Anti-tip flip up (user operated)

NTR090033	Anti-tip tubes, flip-up (upwards), LH (12) (+)	134
NTR090008	Anti-tip tubes, flip-up (upwards), RH (12) (+)	134
NTR090035	Anti-tip tubes, aluminium, sport, plug-in (13) (+)	73
NTR090010	Transit wheels (14) (+)	194
NTR090016	Frame protection	67

(1) 20 mm additional frame length between front edge of seat upholstery and knee bend

(2) No change from 3" & 4" castor to 5" & 6" afterwards possible

(3) Only with 0 mm and 30 mm inset, minimum seat-height difference front / rear: 30 mm

(4) Not in combination with 88° frame angle

(5) Not available for seat width 320 mm

(6) Always 3° more than the standard axle camber

(7) Not with COG 68 - 104 mm. Not with seat height 370 - 420 mm and 24" & 370 - 430 mm with 25". Not with carbon axle tube. Not with sport anti-tip & tip-assist

(8) Not for handbike use, only up to seat width 460 mm

(9) Not available with anti-tip

(10) Only in combination with tip assist

(11) Not available with tip assist

(12) Not in combination with handbike axle

(13) Not with carbon axle; not with COG 20 mm


(14) 3" wheels

EMPULSE F55 Bundling		£
EMO000101	With F55 order, not mounted to the wheelchair	0
EMO000102	With F55 order, mounted to the wheelchair	0
(Please use separate OF to order the F55. Not with suspension, not with Lightweight Compact brake EVO )		

Castor Forks		£
NTR080013	Castor fork, Carbotecture ® (not suitable / approved for power add-ons), black (4) 	0
	Orange Silver Red Blue	
NTR080029	Castor fork, Aluminium, black (6)	0
	Orange Silver	
NTR080008	Castor fork, aluminium, one-arm. Standard colour: black (7)	168
	Orange Silver Red Blue	
NTR080007	Castor fork, aluminium, suspension (Frog Legs ®), black (8) (+)	283

Castor Wheels		£
NTR080301	Castor, solid (hard), rim: composite, black (9)	0
NTR080302	Castor, solid (soft), rim: composite, black (10)	0
NTR080303	Castor, solid (hard), light-up, rim: composite, black (11)	67
NTR080304	Castor, solid (hard), rim: aluminium (12)	79
NTR080306	Castor, solid (soft), rim: aluminium, silver (12)	79
	Colour Rim: Black Orange Red Blue	
NTR080060	Castor, solid (soft), rim: carbon-composite, ultralight (13) 	100

Rear Wheels		£
NTR070000	Without rear wheel	0
NTR070001	Rear wheel, Universal, 36 spokes (silver), cross-wise spokes (15) (+)	0
NTR070002	Rear wheel, Design, 36 spokes (silver), straight spokes (15)	0
NTR070003	Rear wheel, Lightweight, 24 spokes (silver), straight spokes (16)	0
NTR070004	Rear wheel, Proton, 24 spokes (black), straight spokes (17) 	483
NTR070005	Rear wheel, Spinergy, 18 spokes (black), straight spokes; hub: silver	437
NTR070006	Rear wheel, Spinergy, 12 spokes (black), straight spokes, hub: silver	674
NTR070007	Rear wheel, Spinergy, 12 spokes (black), straight spokes, hub black	674
NTR070009	Rear wheel, Mountainbike, 36 spokes (silver), straight spokes (15)	297
NTR070010	Mountainbike wheel, replacement kit incl. tyre (extra coarse profile) (15)	597

Quick Release Axle		£
NTR070150	Quick-release axle (18)	0
NTR070153	Quick-release axle superlight, Titan (19) <b>(RED PIN)</b> 	50

Tyres		£
NTR070101	Tyre, pneumatic, fine profile, Schwalbe Right Run	0
NTR070106	Tyre, pneumatic, tread, Schwalbe Downtown Two Grip (15) (+)	90
NTR070107	Tyre, pneumatic, slick, Schwalbe One 	90
NTR070102	Tyre, puncture proof, tread (+)	0
NTR070104	Tyre, pneumatic, puncture proof, tread, Schwalbe Marathon Plus Evolution (+)	90

(1) Docking pins assembled; not with suspension, not with lightweight compact brake  
(2) Docking pins assembled; not with suspension, not with lightweight compact brake; ATTITUDE order on separate order form  
(3) Please use separate OF to order F55. Not with suspension, not with Lightweight Compact brake EVO  
(4) Only 111 mm  
(5) Red and Blue only in combination with soft castor  
(6) Only 123 mm  
(7) Only 111 mm length & only with 4" & 5" aluminium soft; aluminium solid  
(8) Only in combination with 4" & 5" solid & all aluminium castors. Only black


(9) 3" - 6"; not with one arm fork  
(10) Only 5" & 6"; not with one arm fork  
(11) Not available for 6"; not with one arm fork  
(12) Only for 4" & 5"  
(13) Only 4"  
(14) For users with higher user weight than 100 kg, we recommend cross spoked wheels  
(15) Only 24"  
(16) See colour options on last page  
(17) User weight limit 100 kg  
(18) Standard, stainless steel  
(19) Not with Universal wheel

Handrims			£
NTR070201	Handrims, aluminium, powder-coated, clear		0
NTR070202	Handrims, aluminium, anodised, silver		0
NTR070203	Handrims, aluminium, powder-coated, coloured (1)		60
NTR070204	Handrims, stainless steel, silver (+)		0
NTR070205	Handrims, titanium, untreated		185
NTR070206	Handrims, titanium, powder-coated, clear		185
NTR070207	Handrims, Supergrip ® (+)		222
NTR070208	Handrims, Maxgripp ® (2) (+)		222
NTR070212	Handrims, Ellipse 3R, black (+)		177
NTR070250	Handrim cover, rubber (3)		90
B4M	Handrims, Carbolife QUADRO (2) (4) (+)		300
B4M	Handrims, Carbolife GEKKO (4) (+)		300

### Handrim Mounting

NTR070307	Handrim mount, super narrow (7 mm) (5)		0
NTR070317	Handrim mount, narrow (17 mm)		0
NTR070327	Handrim mount, wide (27 mm)		0

### Axle Tube

Axle Tube			£
NTR010401	Axle tube, aluminium, black		0
NTR010402	Axle tube, carbon, black (6)		203
NTR010403	Axle-assembly superlight, Carbon (6) (7)		203

### Wheel Camber

Wheel Camber			£
NTR070600	0°		0
NTR070603	3°		0
NTR070606	6° (8)		0
NTR070609	9° (9)		0

### Spoke Guards (2)

Spoke Guards (2)				£		
NTR070831	Transparent			150		
NTR070826	Rotation	NTR070815	Graphik	NTR070804	Bibbo	150
NTR070810	Fantasy	NTR070813	Galaktica	NTR070805	Cheese	150
NTR070823	Princess	NTR070808	Dancing Bear	NTR070818	Jungle Fever	150
NTR070816	Happy Lions	NTR070832	Water World	NTR070825	Randolf	150
NTR070619	Monkeys	NTR070821	Pirates	NTR070811	Feather	150
NTR070820	Oriental	NTR070824	Racing	NTR070809	Dirt Race	150
NTR070829	Superhero	NTR070814	Graffiti	NTR070806	Chrome	150
NTR070817	Hot Wheels	NTR070802	Basketball	NTR070803	Basketball 2	150
NTR070822	Pool	NTR070812	Flying Water	NTR070828	Space	150
NTR070827	Silk	NTR070801	Abstract	NTR070807	Creative	150
NTR070830	Tiger	NTR070833	Zebra			150

(1) Select colour on last page

(2) Only 24"

(3) Not with 25" and 26" and Ellipse

(4) B4M leadtimes and conditions apply

(5) Only with stainless steel and Ellipse

(6) Add-ons (push-devices, trailers etc.) must not be clamped to the carbon tubes

(7) Not with WheelDrive; only 0° camber, no adjustment of track-width possible

(8) Not with carbon axle tube. Not with WheelDrive

(9) Not with carbon axle tube. Not with handbike axle &amp; WheelDrive



Wheel Locks		£
NTR060001	Standard brake	0
NTR060002	Knee-lever brake	56
NTR060023	Compact brake EVO (1)	0
NTR060024	Lightweight compact brake EVO (1) (2) 	155
NTR060010	Brake lever extension, knee-lever brake, fold-down (3)	56
NTR060006	Compact one-arm brake, left actuation (+)	151
NTR060007	Compact one-arm brake, right actuation (+)	151

Accessories		£
NTR090000	Tool Kit	0
NTR090024	High pressure pump (0 - 11 bar)	73
NTR090025	Air Pump	15
NTR090030	Back pack	59
NTR090020	Net bag	22
NTR090019	Caddy, flip-up bracket for bags (4) (5)	59
NTR090100	Tie down brackets for transportation	0
NTR090014	Frame reinforcement kit for add on bike (6)	300
NTR090026	Mobile phone pocket	44

Frame Colours				£
	Frame	Handrim	Hub/Rim	
01 White (RAL9010)			26 Silver Texture	
02 Brilliant Silver			27 Graphitemetallic	
03 Silver Matt			28 Platinmetallic	
04 Silver			29 Black	
05 Sun Yellow			31 Matt Black	
07 Brilliant lime			32 Signal White	
08 Matt Lime			33 Pink	
14 Blue			34 Dark Chocolate Metallic	
15 Brilliant Marine			35 Skyblue	
16 Matt marine			36 Cyan-Metallic	
19 Brilliant Purple			37 Marsred (Orange)	
20 Matt Purple			39 Cappuccino	
21 Red Ruby			40 Kiwi	
22 Brilliant Red			41 Flamingo-Glitter	
23 Matt Red			42 Matt Anthracite	
24 Tutti Frutti Orange			43 Azure Blue	

(1) Not available with 6° &amp; 9° camber

(2) Adjustment of COG  $\pm 20$  mm on a wheelchair in the field. Not for use with add-on bikes

(3) Only with NTR060002

(4) Not in combination with high mounted footrest

(5) Not with LLL 220 - 360 mm

(6) Not necessary in combination with ATTITUDE handbikes

(7) Please consult our colour catalogue to review your colour choice

(8) Only with rear wheel, universal

Sticker Colours		£
NTR100550	Black	0
NTR100551	Silver	0
NTR100552	Orange	0
NTR100553	Red	0
NTR100554	Blue	0

Axle Stem Clamp Colours		£
NTR100560	Silver	0
NTR100561	Orange	0
NTR100562	Red	0
NTR100563	Blue	0

Frame Graphic 'Floating Dots'		£
NTR100570	Black	0
NTR100575	Matt Black	0
NTR100571	Silver (Grey)	0
NTR100572	Orange	0
NTR100573	Red	0
NTR100574	Blue	0

24" Lightweight Wheel Colours		£
NTR100335	Black	0
NTR100336	Orange Anodised	0
NTR100337	Blue Anodised	0
NTR100338	Red Anodised	0

(1) No choice of sticker colours (NTR100550-554) in combination with frame graphic "Floating Dots" possible. The "Nitrum" sticker on the caster-link is always the same colour as the chosen Floating Dots- colour

(2) Anodised colours for hub and rim, black spokes. Only with lightweight wheel in 24"

## Comments

--

## Nitrum

€

<b>Base Price</b>	<b>00,000.00</b>
Total Of Additional Equipment	
Packaging And Transport	
Exclusive VAT	
VAT	
<b>Total Price</b>	

## Date

## Signature

Day      Month      Year

**Sunrise Medical Ltd**

Thorns Road  
 Brierley Hill  
 West Midlands  
 DY5 2LD  
 Phone: +44 (0) 845 605 66 88  
 Fax: +44 (0) 845 605 66 89  
 E-Mail: info@sunmed.co.uk  
 www.SunriseMedical.co.uk

## Please follow this measuring method:

The following method is recommended on the basis of extensive practical experience. Deviations are possible in individual instances.

### Seat width (SW):

- For the user: Allow space between sideguard and hip on each side of the chair (approx. 10 - 20 mm altogether).
- On the wheelchair: From outside frame tube to outside frame tube.

### Seat depth (SD):

- For the user: When sitting upright: leave space for 2 - 3 fingers between front edge of the seat upholstery and back of knee (approx. 30 - 60 mm). Care must be taken with adjustable upholstery.
- On the wheelchair: From back tube to front of seat upholstery.
- Nitrum with angle-adjustable backrest; use the backrest bracket as base for the measurement and then add 6mm (wall-thickness of the backrest-bracket) to achieve a correct measurement.

### Front seat height:

- For the user: When sitting with 90° kneeangle: From back of knee to bottom of shoe sole.
- On the wheelchair: From front edge of the seat-upholstry, next to the seat-tube to the ground (min. 30 mm longer than user measurement). Remember to include the cushion height.

### Rear seat height:

On the wheelchair: From rear edge of the seat-upholstery, next to the seat-tube to the ground.

**Note:** Maximum seat height difference rear to front is 130 mm.

### Back height:

- For the user: From the seat, including cushion, to be no more than 10 - 20 mm below the lower shoulder blade.
- On the wheelchair: From top of the seat-upholstery to upper edge of backrest upholstery.

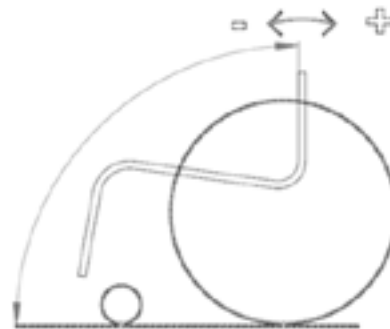
**Note:** The user's ability to sit upright has a major influence on the back height and it can therefore differ considerably.

### Back angle:

**Important:** The back height depends on the degree of disability.

0° is the angle 90° to the ground. Negative angles are <90°

(-) and positive angles are >90° (+)



## Technical Data

Overall width:		Overall width with: 24" Rear wheel	25" Rear wheel
Overall width:		For 0° camber: SW + 170 mm	SW + 170 mm
Max. overall height:	1000 mm	For 3° camber: SW + 230 mm	SW + 240 mm
Max. overall length:	992 mm	For 6° camber: SW + 290 mm	SW + 300 mm
		For 9° camber: SW + 360 mm	SW + 370 mm

Please note that the matrix is based on a std configuration:

**Standard wheelchair 400 x 400 mm; 560 mm COG; Seat angle of 8°**

All changes in the configuration might change the seat heights.

Manufacturing tolerances of +/- 10 mm

## Weight

We want to be very transparent on weight. The following information will be a guide to the lightest possible Nitrum: how to achieve a 7,5 kg wheelchair, and how to order the lightest possible configuration for your Nitrum.

### Nitrum: 7,5 kg configuration

**Frame:** high frame, 92°, 30 mm inset, seat width: 360 mm, seat depth: 400 mm. Seat height: front 470 mm, rear 430 mm. Seat-sling Airflow superlight

**Footrest:** tubular footrest

**Forks and casters:** 111 mm carbotech-ure fork; 4" Castor, solid (soft), rim: carbon-composite, ultralight



**Backrest:** Lightweight Aluminium backrest, push-bar release, 325mm height; without push-handles

**Sideguards:** Carbon fibre, slim-style

**Axle-tube :** Axle-assembly superlight, Carbon

**Wheel-locks:** Lightweight compact brake EVO

**Rear wheels:** 24" Proton wheels with Aluminium handrims (coated or anodized) and Schwalbe One tyres; quick-release axles superlight, titan

(Please mind that there is a 5% tolerance on all weight specifications due to weight deviations on mounting parts (tyres, caster-wheels etc.)

## Lightweight-Guide for ordering the Nitrum

Sunrise Medical offers a wide variety of options for the Nitrum to suit every user's needs. However, most options add significant weight to the wheelchair. To make this more transparent when filling in the order-form, and to assist you in ordering the lightest possible wheelchair, we indicate the approximate weight-increase of the options on the order form:

- (L) Indicates the lightest possible option within the range of options
- (+) Indicates that this option adds more than 500 g to the wheelchair's weight compared to the lightest option within the range

## Lightweight-Options for the Nitrum

We developed several options for the Nitrum to save weight on the chair without sacrificing daily-use suitability, comfort or durability



// **Seat sling, Airflow, superlight (NTR020019):** fully adjustable seat-sling with composite buckles and lighter straps (max. user weight 85 kg) (-120 g compared to seat sling "airflow")



// **Axle-assembly superlight, Carbon (NTR010403):**(only 0° camber): glued into the axle-tube, no adjustability of the track-width possible (-160 g compared to NTR010402 carbon axle-tube)

**Castor, solid (soft), rim: carbon-composite, superlight (NTR080060):** lightweight rim, made of carbon-composite material (-80 g compared to Castor, solid (soft), rim: aluminium)

**Quick-release axle superlight, Titan (NTR070153):** (-70 g compared to Standard steel quick-release axles)

**Lightweight aluminium backrest, push-bar release (NTR030159):** (-180 g compared to Standard backrest)

## Seat Upholsteries & Cushions



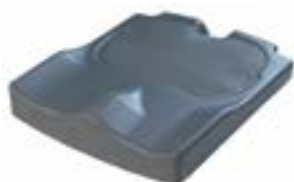
// NTR020002-020004  
Seat sling, nylon, tension adj.



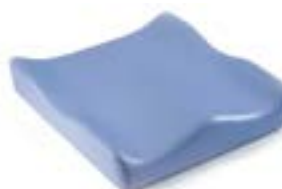
// NTR020012-020018  
Seat sling strap style (airflow)



// JAY020002 JAY Basic  
(pictured without cover)



// JAY020001 JAY Easy Visco  
(pictured without cover)



// JAY020003 JAY Soft Combi P  
(pictured without cover)



// JAY020004 JAY Lite  
(pictured without cover)

## Backrest



// NTR030201 Push handles long



// NTR030203 Push handles, fold-down



// NTR030204 Push handles, height-adjustable



// NTR030015 Backrest, angle-adjustable, fold-down



// NTR030090 Freestyle Back mit JAY J3 Carbon Rücken (SC)



// NTR030157 Aluminium backrest, push-bar release



// NTR030158 Aluminium backrest, angle-adjustable, twist-lock release



// NTR030211 Pushhandles removable, for Freestyle Back



// NTR030316 EXO Backrest sling (EXO Evo version)



// NTR030317 EXO PRO Backrest (EXO Evo version)

**JAY J3 Backs** (More JAY products available on separate JAY order forms)



// JAY J3 Back Heights from Left to Right: Lower Thoracic, Mid Thoracic, Upper Thoracic, Shoulder Height



// Shallow Contour (SC)



// Mid Contour (MC)

**Sideguard & Armrest**



// NTR040101 Sideguard, carbon fibre, slim, black



// NTR040102 Sideguard, aluminium, cold weather protection (in frame colour)



// NTR040103 Sideguard, aluminium, cold weather protection, fender (in frame colour)



// NTR040104 Sideguard, carbon fibre, fender, cold weather protection (black)



// NTR040061 Flip-back option for sideguard in combination with NTR040102 Sideguard, aluminium



**Footrest**



// NTR050029 Footrest, tubular, lightweight, aluminium



// NTR050030 Footrest, tubular, lightweight, aluminium, with cover



// NTR050034 Footboard, platform, lightw., alum., angle & depth-adj., high-mount, frame colour



// NTR050125 Footboard, platform, Performance, aluminum, angle-adj.



// NTR050026 Footboard, platform, lightweight, carbon fibre, angle and depth-adj.



// NTR050127 Foot positioning plate



// NTR010040 Design frame protection



## Frame Versions

	Inset (in mm per side)		
Angle (a)	0 mm	10 mm	30 mm
100°	x	x	x
92°	x	x	x
88°	x	-	x

// NTR010207 Frame long: Additional 20 mm frame-length ("x") between front-edge of seat-upholstery and the knee-bend

Width between frame-tubes ("y") at the footrest: use the following formula: seat-width - 50 mm - 2x inset  
 Example for 400 mm seat-width and 30 mm inset:  
 $400 \text{ mm} - 50 \text{ mm} - (2 \times 30 \text{ mm}) = 290 \text{ mm}$



## Twin-LED light



// NTR110156 Twin-LED light (mounted on caster stems, battery and controller on calf-strap)



Integrated Li-Ion Battery (3.6V, 2600mAh), on-off-button on controller-box, 3 modes: full power, low power, flash-mode, incl. USB to micro-USB cable for charging

## Frame Accessories



// NTR090001 Tip assist left



// NTR090004 Anti-tip tubes, swing-away



// NTR090007 Anti-tip tubes, plugin, pair



// NTR090035 Anti-tip tubes, aluminium, sport, plug-in



// NTR090008 Anti-tip tubes, flip-up (upwards), user operated





## Rear Wheels



// NTR070001 Rear wheel, Universal, 36 spokes (silver), cross-wise spokes



// NTR070002 Rear wheel, Design, 36 spokes (silver), straight spokes



// NTR070003 Rear wheel, Lightweight, 24 spokes (silver), straight spokes



// NTR070004 Rear wheel, Proton, 24 spokes (black), straight spokes



// NTR07010 Mountainbike wheel



// NTR07003 Rear wheel, Lightweight, 24 spokes in combination with color selection on last page (NTR100336 - NTR100338)



// WDO070201 WheelDrive

## Tyres &amp; Forks



// NTR070101 Schwalbe Right Run



// NTR070106 Schwalbe Down Town



// NTR070107 Schwalbe One



// NTR070104 Schwalbe Marathon Plus Evolution



// NTR070102 Tyre, puncture proof, tread



// NTR080013 & NTR080306 Castor fork, Carbotecture & Castor solid (soft) aluminum



// NTR080008 Castor fork, aluminum, one-arm, blue

## Handrims



// NTR070208 Handrim Maxgrepp®



// NTR070212 Handrim Ellipse 3R

## Axle Tubes



// NTR010403 Axle assembly super-light



// NTR010402 Carbon axle-tube  
// NTR100553 Axle-stem clamp colour, red

## Wheel Locks



// NTR060001 Standard brake



// NTR060002 Knee-lever brake



// NTR060023 Compact brake EVO



// NTR060004 Lightweight Compact brake EVO

## Accessories



// NTR090000 Tool kit



// NTR090024 High pressure pump



// NTR090025 Air pump



// NTR090030 Back pack



// NTR090019 Caddy, flip-up bracket for bags



// NTR090026 Mobile phone pocket

## Frame Graphics



// Frame Graphics "Floating Dots"



// NTR100336  
Lightweight wheel, anodized orange



// NTR100337  
Lightweight wheel, anodized blue



// NTR100338  
Lightweight wheel, anodized red

## Frame Options



// Nitrum Hybrid Pro